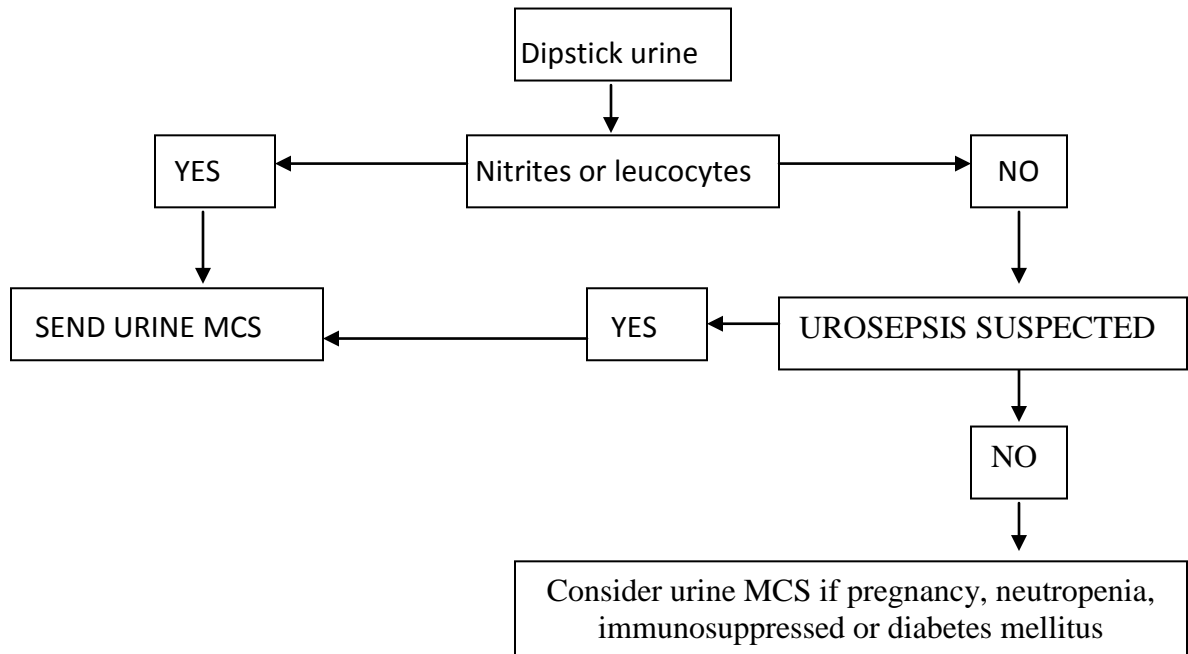


Urine microscopy, culture and sensitivities (MCS) - Clinical Information

Indications

- Suspected urinary tract infection (urosepsis) or post-treatment of urinary tract infection
- Red cell morphology in haematuria (phase microscopy on fresh urine)- sample must be received in the laboratory within 2 hours.

Protocol



Clinical notes

- Type of specimen (eg. MSU, CSU)
- Antibiotic therapy
- Pregnancy, diabetes mellitus, neutropenia